

PLANET PUZZLE

The planets below are listed in size order, largest to smallest.

Can you draw arrows between each planet and its correct position in the solar system?

Use the clues and the pictures to help you.

The first one has been done for you.

LARGEST

JUPITER



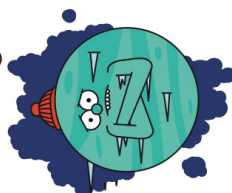
There is one planet between Jupiter and Earth.

SATURN



Saturn is closer to the Sun than Uranus is.

URANUS



Uranus is next to a very cold planet.

NEPTUNE



To get to Neptune from Earth, you have to go past four other planets.

EARTH



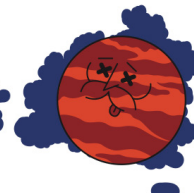
Earth is in between two smaller planets.

VENUS



Venus is the second closest planet to the Sun.

MARS



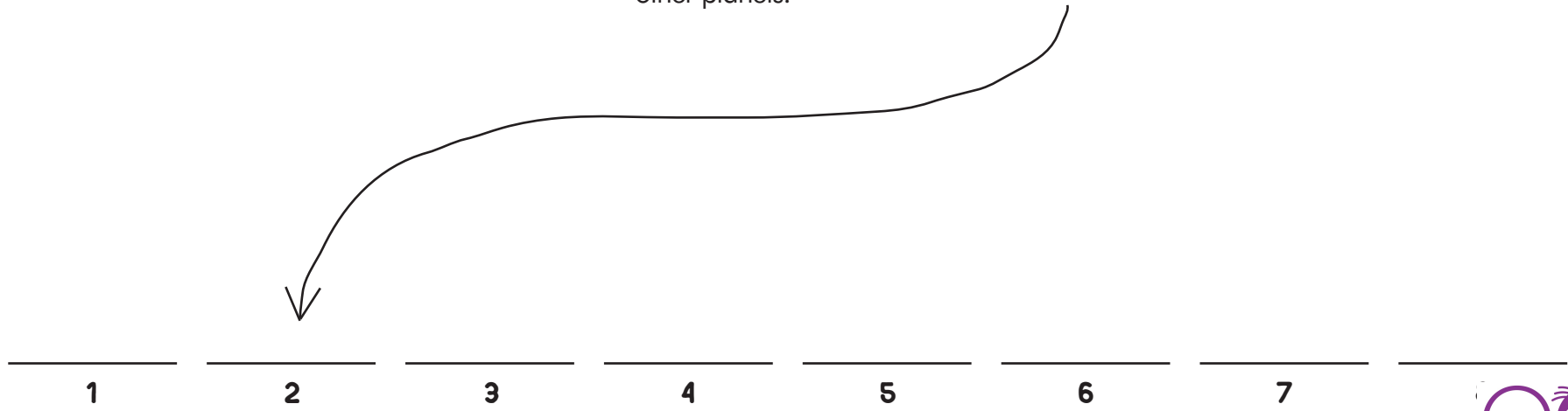
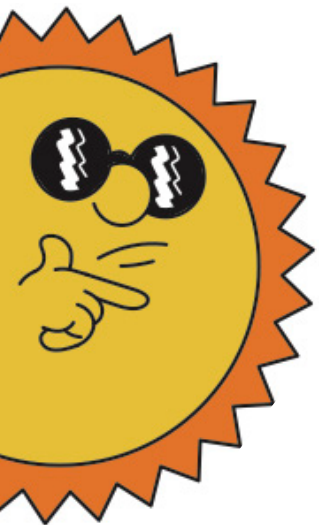
Mars is next to the largest planet.

MERCURY



Mercury's only neighbour is Venus.

SMALLEST



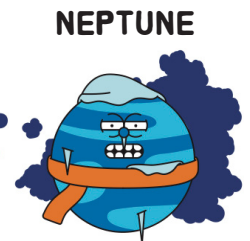
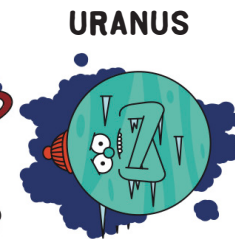
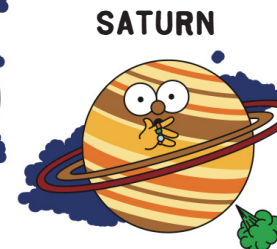
A QUICK HISTORY OF THE UNIVERSE

ANSWERS

Mercury's only neighbour is Venus, so it can only go in the number 1 spot!

Earth is in between two smaller planets. That means Mercury, Venus or Mars. It can't go between Mercury and Venus, so it must be between Venus and Mars.

Mars is next to the largest planet. So Jupiter goes in spot number 5.



To get to Neptune from Earth, you have to go past four other planets. That puts Neptune in spot number 8, the farthest from the Sun.

Uranus is next to a very cold planet. Neptune's wearing a rather fetching scarf...

... and Saturn is closer to the Sun than Uranus is. So Saturn takes spot number 6, and Uranus takes number 7.